

# Invenia ABUS 2.0 Advancements



When it comes to providing effective breast care, image quality, patient experience and efficiency are paramount. Invenia™ ABUS 2.0 is designed to image dense breast tissue in both screening and diagnostic applications. The new advancements deliver improved image quality and a host of updates and new features.

## An Image Quality Evolution

### cSound™ ImageFormer

This advancement in image formation transforms processing from hardware to software producing exquisite image quality far beyond prior GE Healthcare ABUS platforms. The massive processing power of the cSound ImageFormer provides many benefits. The acquisition automatically creates focus at every pixel resulting in consistent high resolution image quality, faster acquisitions and reproducibility from user to user.

## Scan Station Enhancements

### Improve exam personalization

- **Customizable Scanning Protocols** – Access custom scanning protocols quickly
- **Unlocking Scan Head Assembly** – Achieve improved tissue coverage and patient comfort
- **Manual Stop Scan** – Shorten acquisition sweeps for smaller breasts and spot scanning
- **Three Additional Scan Views** – Improve tissue coverage with more views – UIQ (upper inner quadrant), LOQ (lower outer quadrant) and AX (Axilla)
- **Three Expanded Depth Settings** – Achieve appropriate depth with added settings (2.5, 3.0, and 6.0 cm)

### Achieve new efficiencies

- **Scan Arm Redesign** – Extend reach 7" lower (accommodate lower bed heights)
- **Two Additional Exam Review Options** – Expanded image review options include **Transverse Preview** and **automated CINE Review**
- **Privacy Screen** – Aid patient privacy for the exam screen

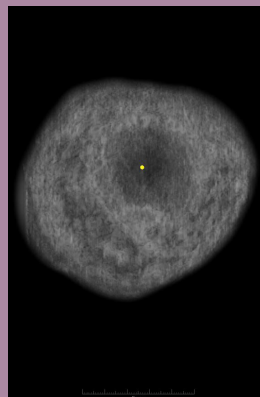
### Expand data management

- **Direct Send** – Transfer volumes to review stations while exam is in process for immediate interpretation
- **Multi-destination** – Transmit exam volumes to up to 5 destinations

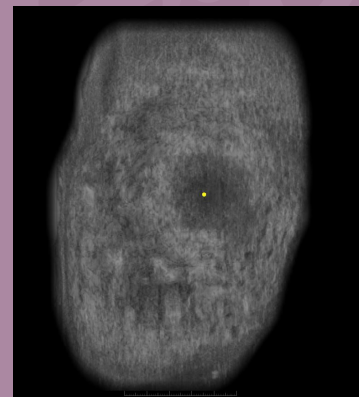
- **DICOM Data Sets** – Send DICOM® multi-frame objects to PACS
- **External USB port** – Store exams on portable device
- **Parallel Post Processing** – Improve workflow and throughput to the reading station
- **Coronal and curved transverse in PACS** – Expanded views now available to view on PACS

*“The best new feature for me is the unlock feature. I can unlock my scan head and contour with the patient’s body allowing me to get the best pictures every time. Every patient is different, so this allows us to adjust and get better contact for each body.”*

– Caroline Kerns, technologist, Imaging for Women, Kansas City, MO.



Locked



Unlocked

# Invenia ABUS Viewer enhancements

## Increase speed and efficiency

- **Programmable Hot keys** – Activate frequently used functions in a single keystroke
- **Three-on-One Viewing Format** – Analyze all planes simultaneously in one view
- **Auto Prior Compare (Fast Past)** – Recall prior exams for comparison of the same view
- **Fast normal report** – Efficient report workflow for negative studies
- **Compare Studies on Clipboard** – Use large clipboard thumbnails for quick reference
- **Hanging Protocol Improvements** – Move quickly through studies with navigation updates
- **Temporal Compare Studies** – Improve workflow for multi-year prior exam comparisons
- **Multiple Viewer Reading** – Review across multiple viewers and/or locations with automatic sharing of completed exam interpretation information
- **Windows® 10 support** – Fast, secure, advanced data processing

## What are users saying?\*

- Better compressed images and tissue coverage
- Shorter scan times
- Unlock feature of the scan head gives technologists better contact and the ability to cover more tissue
- For acquisition image review, seeing axial images as well as the coronal images allows technologists to better assess compression and coverage of the tissue
- Much better quality and detail, with better contrast resolution and less noise
- More detailed images make the exam more sensitive for finding cancer and decreases false positive call backs
- When comparing to last year's exams with prior version system, it reveals a significant improvement in image quality

\*Comments provided by radiologists at Rush University Medical Center, Chicago, IL. April 2019, Aunt Minnie GE Healthcare sponsored email.



© 2019 General Electric Company – All rights reserved.

GE Healthcare reserves the right to make changes in specifications and features shown herein, or discontinue the product described at any time without notice or obligation. Contact your GE Healthcare representative for the most current information. GE, the GE Monogram, Invenia and cSound are trademarks of General Electric Company. GE Healthcare, a division of General Electric Company. Windows is a registered trademark of Microsoft Corporation. DICOM is a registered trademark of the National Electrical Manufacturers Association (NEMA). GE Medical Systems, Inc., doing business as GE Healthcare.

July 2019  
Global  
JB69002XX

